

## LETTERS

edited by Jennifer Sills

## Financing Nuclear Liability

IN LIGHT OF THE 2011 FUKUSHIMA DISASTER, recent discussion has focused on finding the best nuclear storage options (1) and maximizing the oversight power of global institutions (2). However, even with the best risk-informed planning and guidelines, accidents at nuclear power plants (NPPs) could still occur (3). The 1990 report from a U.S. presidential commission estimates that the catastrophic nuclear accident probability in the United States (about 100 nuclear reactors) in the remaining lifetime of 40 years per plant is one accident in 250 thousand years (4). There are currently 438 NPP units worldwide (predicted to increase to 500) (5); extrapolating the U.S. figure with some uncertainty considerations to obtain the worldwide average time to an accident yields an estimate of one accident in 5 thousand to 50 thousand years for remaining lifetimes. Given the possibility of another accident, in addition to strengthening safety measures, we should develop dependable liability coverage that can be tapped in an emergency.

In 1957, the United States enacted the Price-Anderson nuclear liability regime for managing the risk of nuclear accidents. The legislation aimed to establish a mechanism for compensating the public for losses and to encourage the private development of nuclear power. With 104 operating reactors, the United States has a total of \$11.975 billion in coverage (as of 2011) (6) before congressional authorization for additional funding. The U.S. Department of Energy provides similar liability coverage for its activities.

Internationally, three conventions are available with similar goals (7): the 1968 Convention on Third Party Liability in the Field of Nuclear Energy, called the Paris Convention; the 1977 Vienna Convention on Civil Liability for Nuclear Damage; and the Convention on Supplementary Compensation for Nuclear Damage (CSC), which will enter into force when ratified by at least five countries with at least 400 GW of installed nuclear capacity.

Estimates of the damage due to a catastrophic accident range from \$110 billion to as much as \$7 trillion (8). Accidents do not recognize political borders and could lead to disputes.

Achieving adequate nuclear liability coverage requires an efficient and cost-effective system with adequate funds to pay damages. Starting with the premise of a worldwide need to mitigate the consequences of one catastrophic nuclear accident, each NPP unit can be assessed for a cost share secured by international legal instruments, subject to adjustments based on, among other metrics,

a safety rating system to create the incentive to reduce accident rates. To succeed, financing will be essential, perhaps via securities and hedge funds.

BILAL M. AYYUB<sup>1</sup>\* AND LORNE PARKER<sup>2</sup>

<sup>1</sup>Center for Technology and Systems Management, Department of Civil and Environmental Engineering, University of Maryland, College Park, MD 20742, USA. <sup>2</sup>Bechtel Corporation, San Francisco, CA 94105, USA.

\*To whom correspondence should be addressed. E-mail: ba@umd.edu

## References

1. A. M. Macfarlane, *Science* **333**, 1225 (2011).
2. M. Bunn, O. Heinonen, *Science* **333**, 1580 (2011).
3. B. Ayyub, *Risk Analysis in Engineering and Economics* (Chapman & Hall/CRC, Boca Raton, FL, 2003).
4. Report to the Congress from the Presidential Commission on Catastrophic Nuclear Accidents (Presidential Commission on Catastrophic Nuclear Accidents, Washington, DC, 1990), Appendix B; [www.state.nv.us/nucwaste/news/rpcna/index.htm](http://www.state.nv.us/nucwaste/news/rpcna/index.htm).
5. European Nuclear Society, Nuclear Plants, World-wide ([www.euronuclear.org/info/encyclopedia/nuclear-power-plant-world-wide.htm](http://www.euronuclear.org/info/encyclopedia/nuclear-power-plant-world-wide.htm)).
6. U.S. Nuclear Regulatory Commission, "Fact sheet on nuclear insurance and disaster relief funds" ([www.nrc.gov/reading-rm/doc-collections/fact-sheets/funds-fs.html](http://www.nrc.gov/reading-rm/doc-collections/fact-sheets/funds-fs.html)).
7. American Nuclear Insurers, "Need for foreign nuclear liability insurance" (ANI, Glastonbury, CT, 2010); <http://nuclearinsurance.com/library/Nuclear%20Liability%20outside%20the%20US.pdf>.
8. S. Raju, M. V. Ramana, *Econ. Polit. Weekly* **XLV**, 16 (2010).

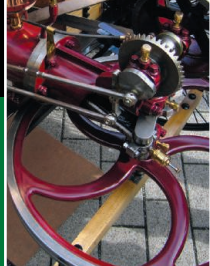
## The Future of Coral Reefs

IN THEIR REVIEW "PROJECTING CORAL REEF futures under global warming and ocean acidification" (22 July, p. 418), J. M. Pandolfi *et al.* argue that the threat of climate change for corals has been exaggerated by pointing to variability in coral heat tolerance, adaptation potential, and the recent fossil record. In doing so, they fail to consider the full range of model assumptions and the precision of the fossil record.

Under the section "Projecting coral reef futures," Pandolfi *et al.* predict that adaptation of the dinoflagellate symbionts that provide the host with energy is likely to help coral reefs maintain their structure in the near future. The argument is based on an untested model of symbiont population dynam-

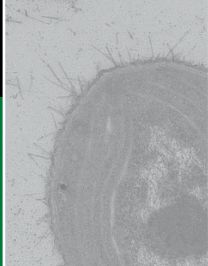
## Letters to the Editor

Letters (~300 words) discuss material published in *Science* in the past 3 months or matters of general interest. Letters are not acknowledged upon receipt. Whether published in full or in part, Letters are subject to editing for clarity and space. Letters submitted, published, or posted elsewhere, in print or online, will be disqualified. To submit a Letter, go to [www.submit2science.org](http://www.submit2science.org).



Disrupting the  
nitrogen cycle

1504



Cyanobacterial  
metabolism

1508



ics (1). This model incorporates tradeoffs between symbionts' thermal tolerance and symbiont population growth, but it ignores tradeoffs that involve essential properties of coral reefs (such as documented reductions in calcification of corals harboring thermally tolerant symbionts). For symbiont adaptation to ensure the future of coral reefs, they would have to simultaneously evolve the following characteristics: (i) thermal tolerance to the synergistic effects of increased atmospheric  $p\text{CO}_2$  on sea water; (ii) capability to maintain metabolic exchange in energy and nutrients between themselves and their coral hosts; and (iii) compatibility across a broad range of available coral hosts and environments. Each of these adaptations is unlikely on its own, and there is little evidence that any have occurred to date (2), making the probability of the simultaneous evolution of all these traits in the near future highly improbable. Even if these adaptations were to evolve simultaneously, coral reef structure would only be sustained if the intrinsic capability of corals to maintain high rates of calcification, above the rates of erosion, were preserved.

Despite acknowledging the absence of analogous periods that match the current rate of change in ocean acidity and temperature, Pandolfi *et al.* draw on the fossil record for insights into past coral reef response to climate change. However, the precision of these records over ecologically relevant time scales (decadal to centennial) is inherently problematic because of the low resolution of radiocarbon aging and the uncertainty associated with the order in which reefs devel-

oped and the dating results (3, 4). In the example presented by Pandolfi *et al.*, proxy records of temperature from sediment cores were sampled on average every  $133 \pm 7$  years, whereas radiocarbon ages were sampled every  $1321 \pm 329$  years; accurate comparison of rates of change that differ over decadal to centennial scales is consequently highly problematic. Conversely, the proxy temperature records from the same core record (5) indicate remarkably stable conditions during the past 10,000 years ( $25.9^\circ$  to  $27.7^\circ\text{C}$ ). Consequently, most paleoecological perspectives are limited in their usefulness for interpreting the rapid trends and impacts that are occurring today.

OVE HOEGH-GULDBERG,\*  
JUAN CARLOS ORTIZ, SOPHIE DOVE

Global Change Institute and School of Biological Sciences,  
The University of Queensland, St. Lucia 4072 QLD, Australia

\*To whom correspondence should be addressed. E-mail:  
oveh@uq.edu.au

#### References

1. M. L. Baskett, S. D. Gaines, R. M. Nisbet, *Ecol. Appl.* **19**, 3 (2009).
2. O. Hoegh-Guldberg, *Coral Reefs* **28**, 709 (2009).
3. R. J. Telford, E. Heegaard, H. J. B. Birks, *Quat. Sci. Rev.* **23**, 1 (2004).
4. E. N. Edinger, G. S. Burr, J. M. Pandolfi, J. C. Ortiz, *Earth Planet. Sci. Lett.* **253**, 37 (2007).
5. D. W. Lea *et al.*, *Science* **301**, 1361 (2003).

#### Response

HOEGH-GULDBERG *ET AL.* ASSERT THAT EVOLUTIONARY responses to climate change in corals are highly improbable in the near future, citing tradeoffs between tolerance to warming and acidification, and two factors

related to the integrity of the coral-symbiont partnership. In support, they cite an earlier paper making similar claims (1), but this reference presents no empirical or theoretical evidence for this thesis.

In fact, the hypothesis that adaptation cannot occur over decadal time scales has been shown repeatedly to be incorrect: Numerous and complex physiological, metabolic, and morphological changes can occur rapidly and repeatedly among independently evolving lineages (2–5). Specifically, tradeoffs are ubiquitous in nature, and, although they influence the rate and direction of evolution (as emphasized in our Review), they do not prevent any evolution from happening. Moreover, contrary to Hoegh-Guldberg *et al.*'s assertions that characteristics of endosymbiosis will impede adaptation in corals, studies of other organisms have found that endosymbionts and hosts, if anything, evolve more rapidly than their free-living counterparts (6, 7).

In our projections section, we discuss Baskett *et al.* (8) because it is the only study that attempts to rigorously determine the potential effects of thermal adaptation on coral cover. Moreover, Baskett *et al.* (8) explicitly include feedbacks of symbiont thermal tolerance on coral colony growth. More broadly, the fact that the model in (8) has important limitations does not justify eschewing attempts to model evolutionary dynamics entirely.

Our Review presented fossil evidence for varying sensitivity of coral reefs to climate change over multiple temporal scales. Hoegh-Guldberg *et al.* argue that the geological record lacks resolution to detect such changes, such as during the well-known and accepted periods of Abrupt Climate Change (ACC) during the early to mid-Holocene (9). However, the decadal- to centennial-scale chronology and paleoclimate from the Cariaco Basin study (10) shows substantial fidelity to high-precision Greenland ice-core records and adheres to all of the best practices recommended in the relevant paper cited by Hoegh-Guldberg *et al.* (11). The Cariaco Basin sediments record continuous annual episodes of sedimentation that generally lack the bioturbation and time-averaging typical of reef deposits, so the concerns with using radiometric dating to study the fine-scale chronology of reef accretion cited by Hoegh-Guldberg *et al.* (12) are irrelevant.

Our Review is emphatic that "coral reefs are indeed threatened by climate change" (Pandolfi *et al.*). However, we believe that the best way for coral reef scientists to inform policy responses to this threat is to do our best to comprehensively and rigorously account for all the processes likely to deter-



mine reefs' responses to climate change—physiological, ecological, biogeographical, and evolutionary.

JOHN M. PANDOLFI,<sup>1,2\*</sup> SEAN R. CONNOLLY,<sup>3</sup>  
DUSTIN J. MARSHALL,<sup>2</sup> ANNE L. COHEN<sup>4</sup>

<sup>1</sup>Australian Research Council (ARC) Centre of Excellence for Coral Reef Studies, St. Lucia, QLD 4072, Australia. <sup>2</sup>School of Biological Sciences, University of Queensland, St. Lucia, QLD 4072, Australia. <sup>3</sup>ARC Centre of Excellence for Coral Reef Studies and School of Marine and Tropical Biology, James Cook University, Townsville, QLD 4011, Australia. <sup>4</sup>Department of Geology and Geophysics, Woods Hole Oceanographic Institution, Woods Hole, MA 02543, USA.

\*To whom correspondence should be addressed. E-mail: j.pandolfi@uq.edu.au

#### References

1. O. Hoegh-Guldberg, *Coral Reefs* **28**, 709 (2009).
2. J. S. Levinton *et al.*, *Proc. Natl. Acad. Sci. U.S.A.* **100**, 9889 (2003).
3. A. P. Hendry, M. T. Kinnison, *Evolution* **53**, 1637 (1999).
4. C. M. Sgro, A. J. Lowe, A. A. Hoffmann, *Evol. Appl.* **4**, 326 (2011).
5. M. Tobler *et al.*, *Evolution* **65**, 2213 (2011).
6. C. Pal, M. D. Macia, A. Oliver, I. Schachar, A. Buckling, *Nature* **450**, 1079 (2007).
7. M. Woolfit, L. Bromham, *Mol. Biol. Evol.* **20**, 1545 (2003).
8. M. L. Baskett, S. D. Gaines, R. M. Nisbet, *Ecol. Appl.* **19**, 3 (2009).
9. R. B. Alley *et al.*, *Science* **299**, 2005 (2003).
10. D. W. Lea *et al.*, *Science* **301**, 1361 (2003).
11. R. Telford, E. Heegaard, H. J. B. Birks, *Quat. Sci. Rev.* **23**, 1 (2004).

12. E. N. Edinger, G. S. Burr, J. M. Pandolfi, J. C. Ortiz, *Earth Planet. Sci. Lett.* **253**, 37 (2007).

#### CORRECTIONS AND CLARIFICATIONS

**News & Analysis:** "8.7 million: A new estimate for all the complex species on Earth" by D. Strain (26 August, p. 1083). The article noted that Nigel Stork of Griffith University in Queensland, Australia, and colleagues published a paper estimating that there are some 3.7 million arthropod species on Earth. This figure was based on a calculation error and was subsequently revised in a corrigendum. Their median estimate, depending on the model, was revised to 6.1 million or 7.8 million species.

**Technical Comments:** Response to Comments on "Drought-induced reduction in global terrestrial net primary production from 2000 through 2009" by M. Zhao and S. W. Running (26 August, p. 1093; [www.sciencemag.org/cgi/content/full/333/6046/1093-e](http://www.sciencemag.org/cgi/content/full/333/6046/1093-e)). The sentence "the reduction of NPP in the 2005 drought of the Amazon is 5.56% of the mean NPP from 2000 to 2004" was incorrect. The reduction was 9.28%, not 5.56%.

**Research Articles:** "Local and long-range reciprocal regulation of cAMP and cGMP in axon/dendrite formation" by M. Shelly *et al.* (29 January 2010, p. 547). The paper included a misleading description of the method of FRET imaging. The last sentence on p. 547 (beginning eight lines from the bottom of the page) should read, "Bath application of the membrane-permeant cAMP analog Sp-8-Br-cAMPS (20  $\mu$ M) or the AC activator forskolin (20  $\mu$ M) resulted in a

global increase of cAMP and PKA signals in ICUE- and AKAR-expressing cells, respectively, as measured by the increase in the ratio of yellow fluorescent protein (YFP) to cyan fluorescent protein (CFP) fluorescence at the neurite (Fig. 2, A, B, D, E, and G) for AKAR, and the ratio of CFP to YFP fluorescence for ICUE." In addition, there was a mistake in the name of a FRET probe used in Fig. 2B and Fig. 4. The label on the left in Fig. 2B should be "AKAR (PKA)," not "ICUE (cAMP)." In the Fig. 2 legend, the first sentence describing panels B and C should read, "FRET signals observed at the neurite tip of 16-hours neurons expressing AKAR or cGES-DES." In the Fig. 4 legend, the first sentence describing panel A should begin, "YFP fluorescence and FRET signals for PKA-activity in an AKAR-expressing hippocampal neuron at 16 hours...."

**Reports:** "Label-free, single-molecule detection with optical microcavities" by A. M. Armani *et al.* (10 August 2007, p. 783). The authors reported the use of optical microresonators immersed in aqueous solutions and functionalized with antibodies to detect small concentrations of the analytes recognized by the antibodies. The Report presented discontinuities in the resonant response, which the authors took to represent the responses from binding individual analyte molecules. The amplitude of these discontinuities was too large to be caused by the direct effect of the analyte binding; to explain their large size, the authors proposed a thermo-optic effect, in which local heating of the resonator surface from light-analyte interaction amplified the effects of analyte binding. However, as noted by Arnold *et al.* [*Optics Express* **18**, 281 (2010)], the thermo-optic effect cannot account for the size of the discontinuities. The origin of the large wavelength discontinuities is being investigated by several independent efforts.

## Learn how current events are impacting your work.

**ScienceInsider**, the new policy blog from the journal **Science**, is your source for breaking news and instant analysis from the nexus of politics and science.

Produced by an international team of science journalists, **ScienceInsider** offers hard-hitting coverage on a range of issues including climate change, bioterrorism, research funding, and more.

Before research happens at the bench, science policy is formulated in the halls of government. Make sure you understand how current events are impacting your work. Read **ScienceInsider** today.

[www.ScienceInsider.org](http://www.ScienceInsider.org)

**ScienceInsider**

Breaking news and analysis from  
the world of science policy

